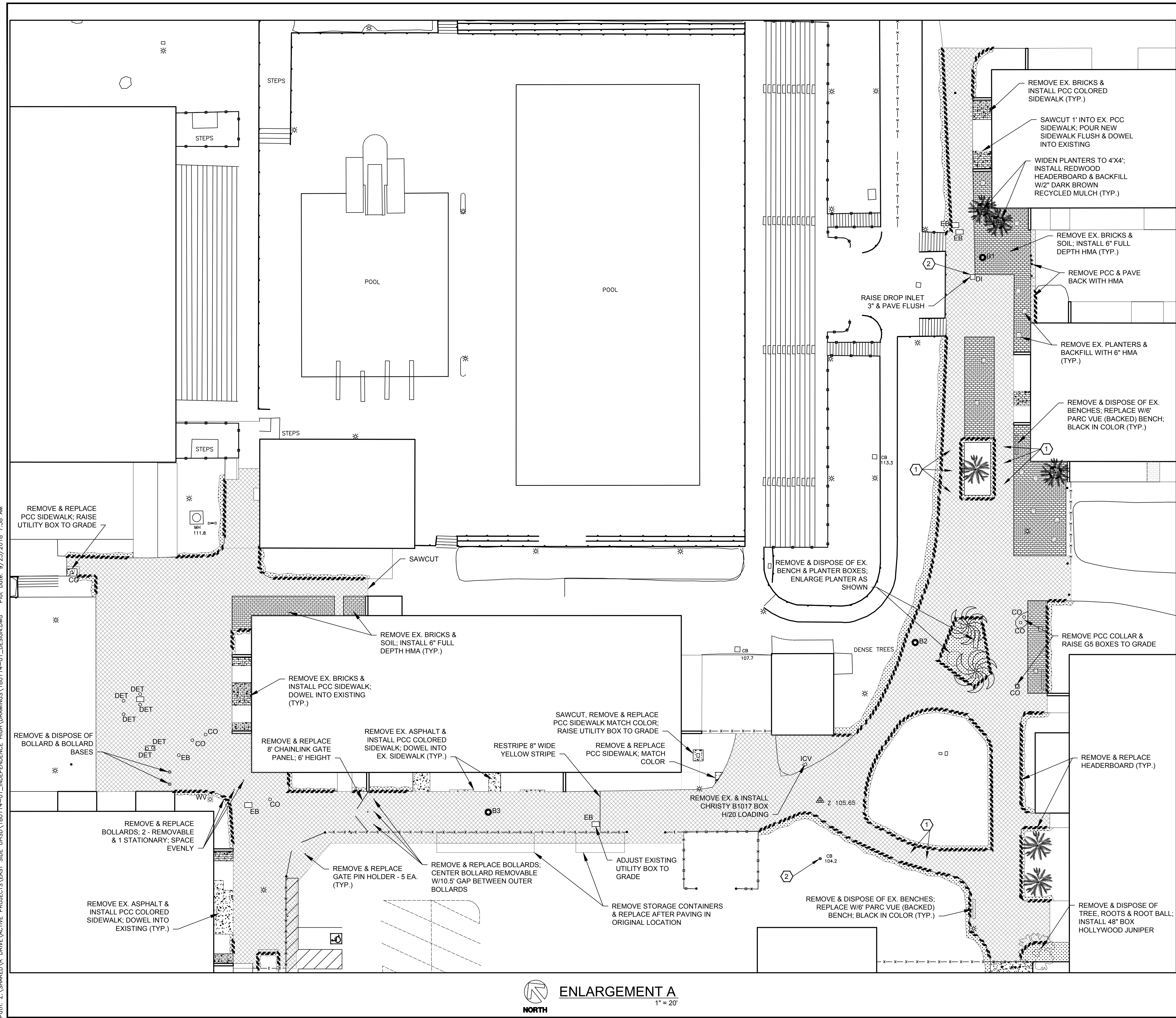



Path: Z:\SHARED\DRIVE ACTIVE PROJECTS\EAST SIDE UHSD\180114-01_INDEPENDENCE HIGH\DRAWINGS\180114-01_DESIGN.DWG Plot Date: 9/25/2018 7:58 AM




LEGEND

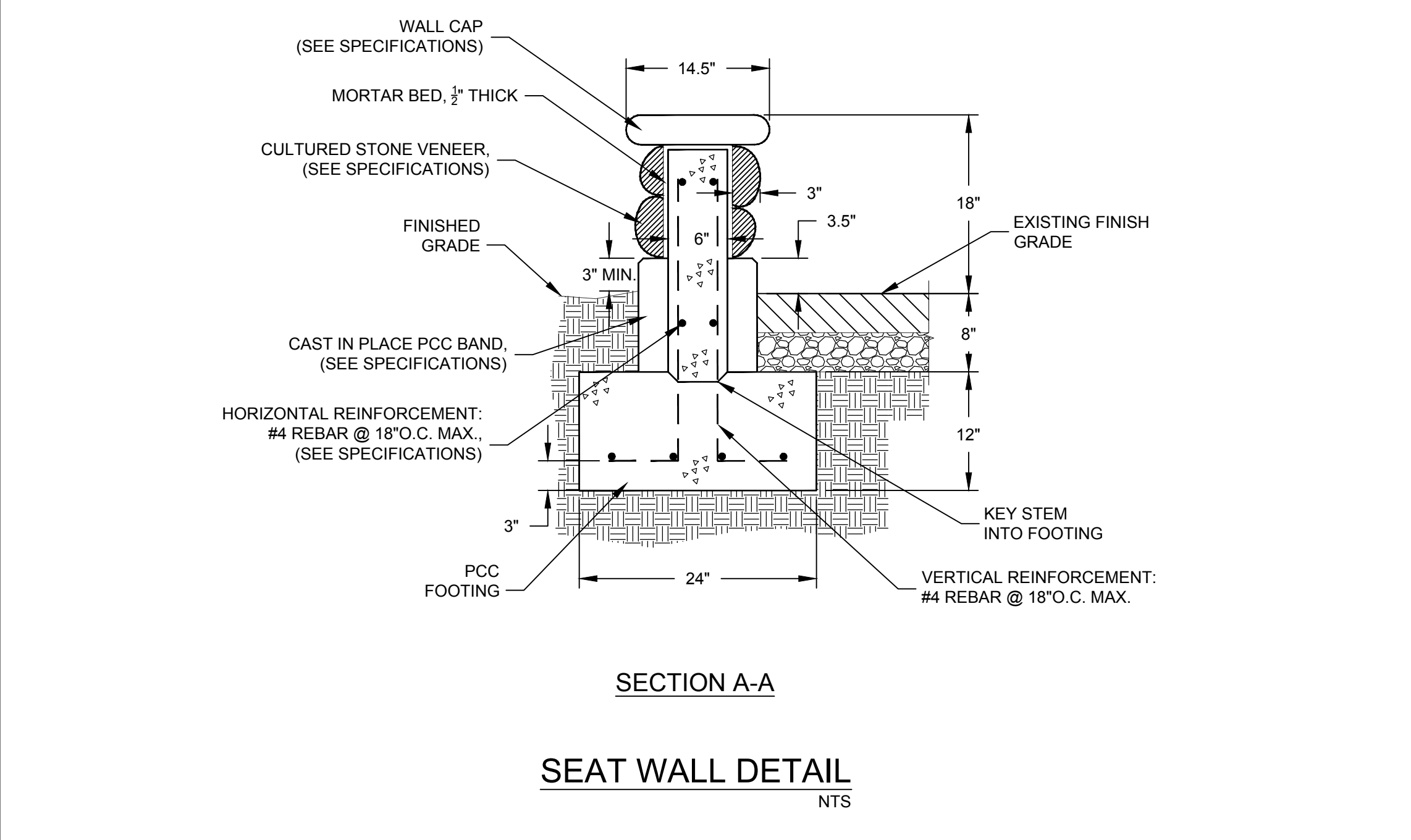
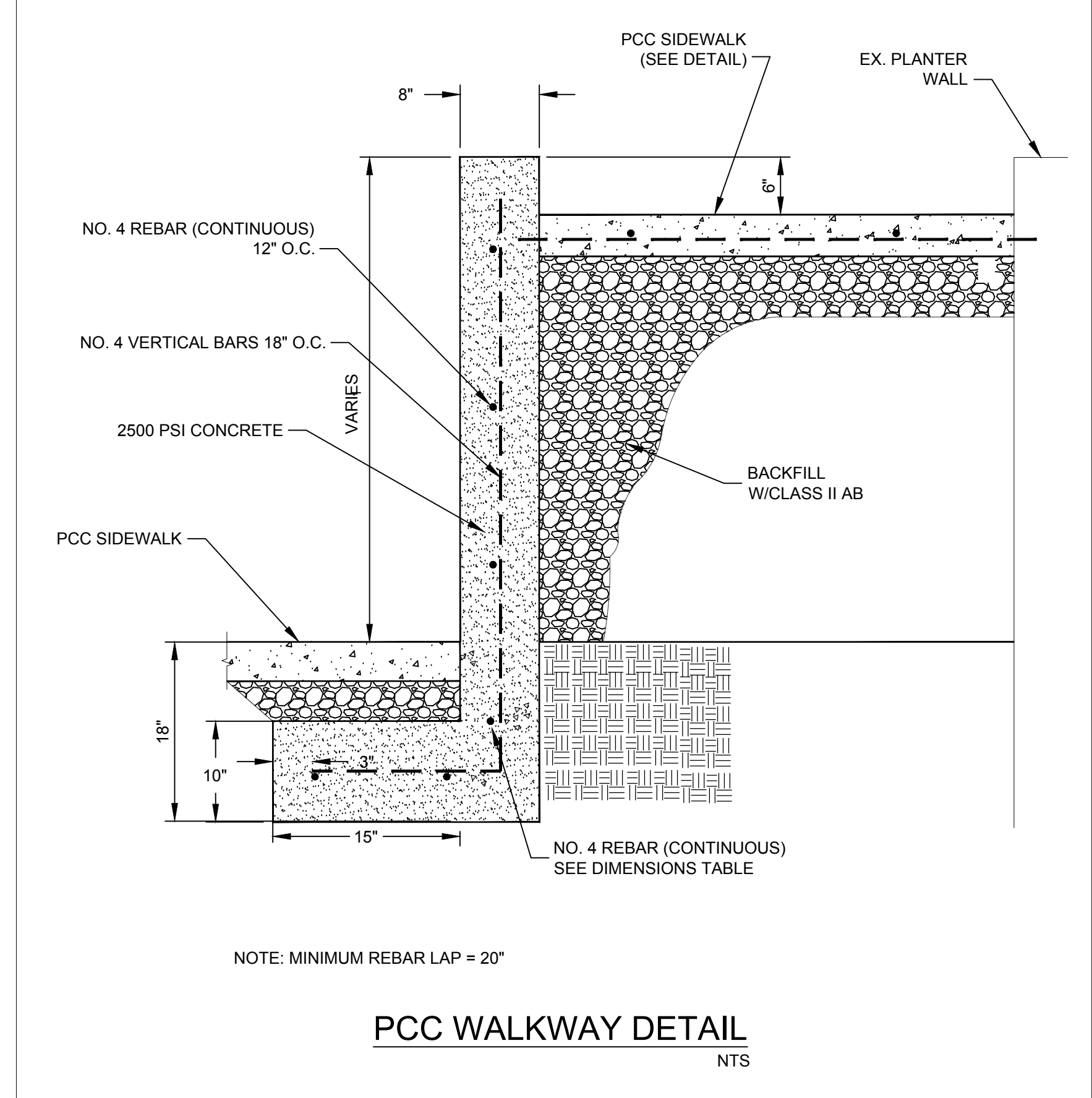
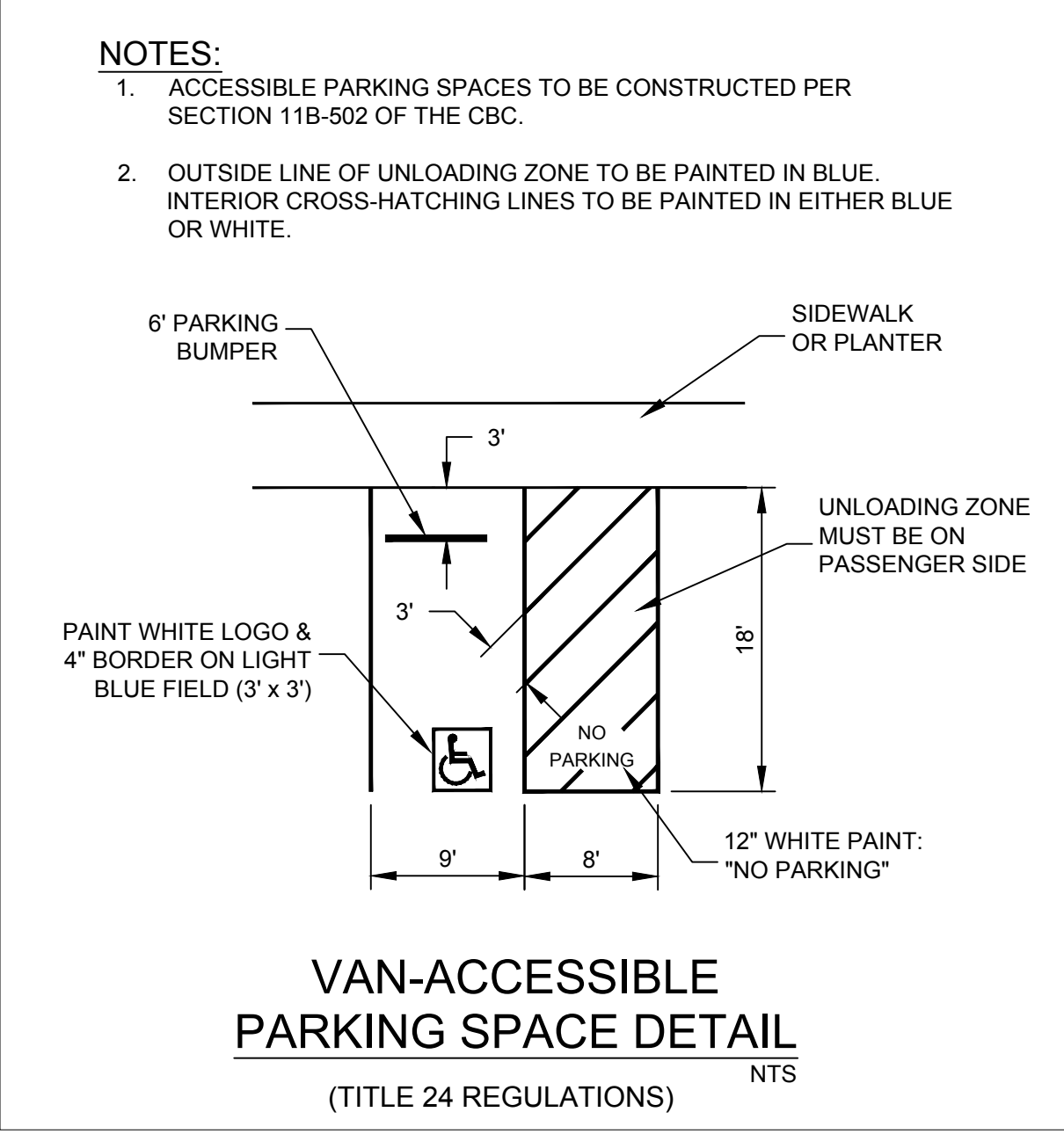
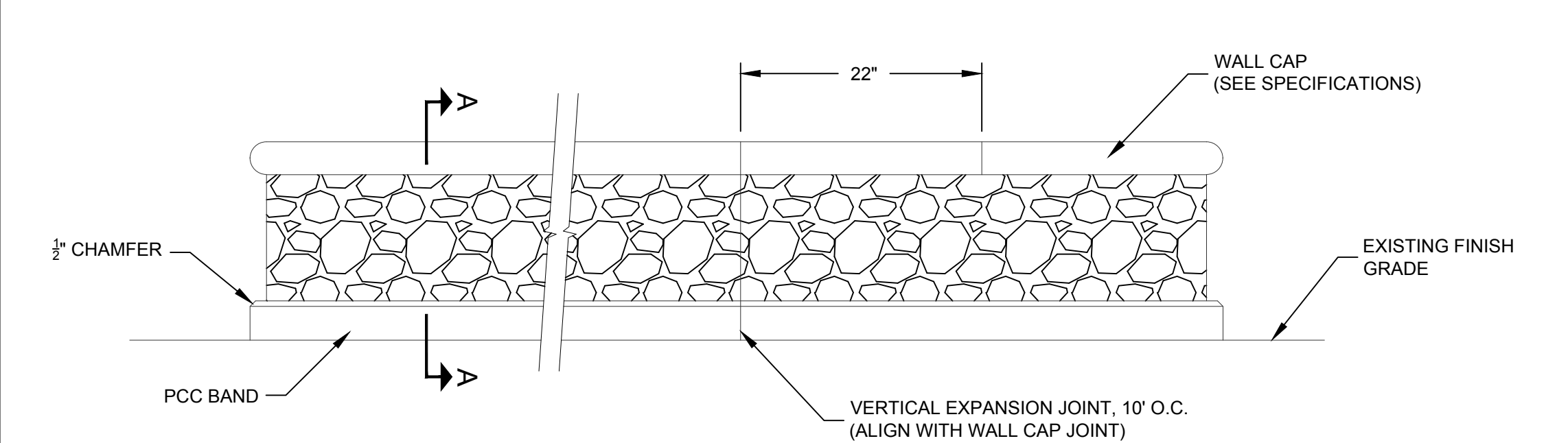
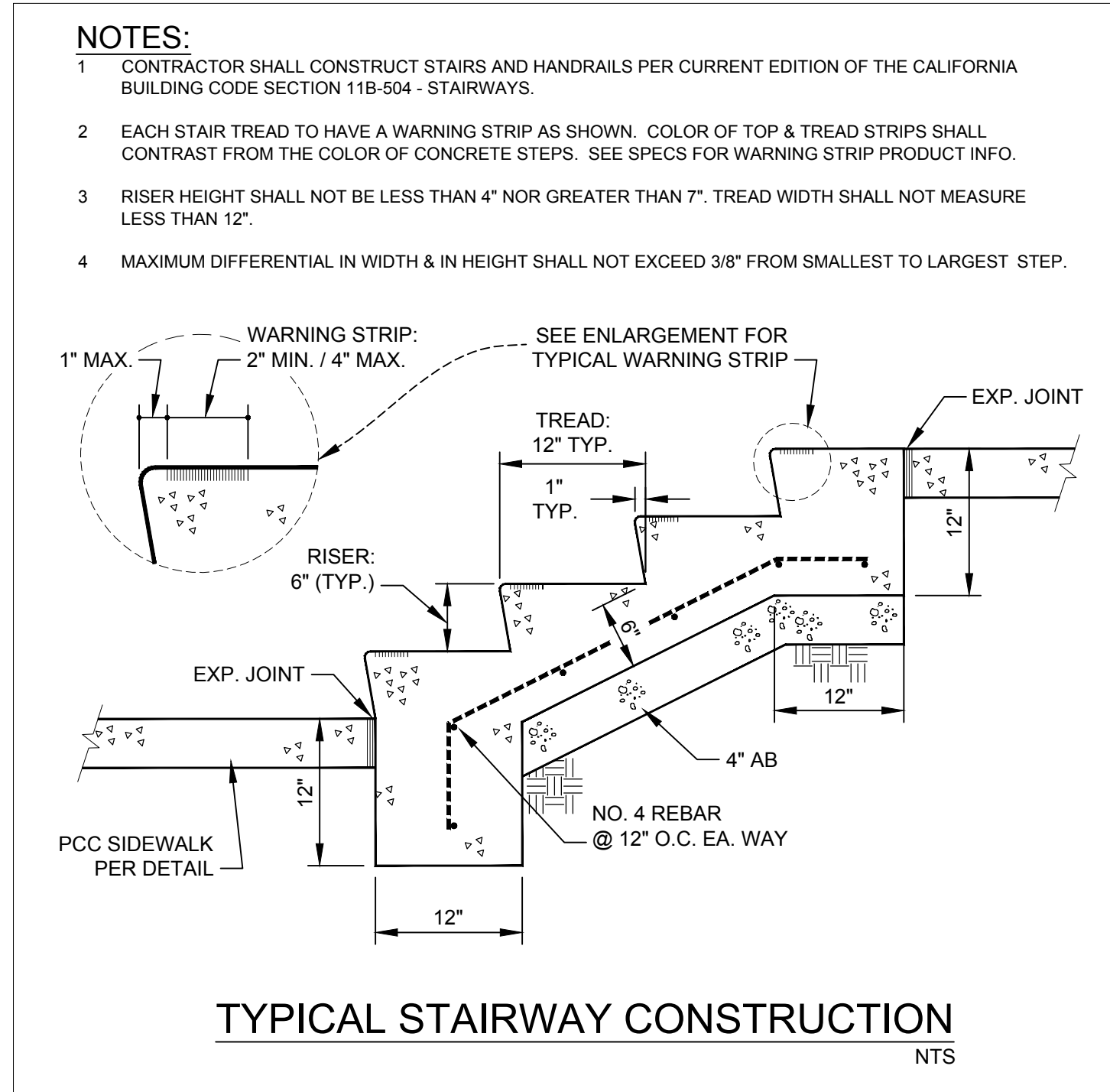
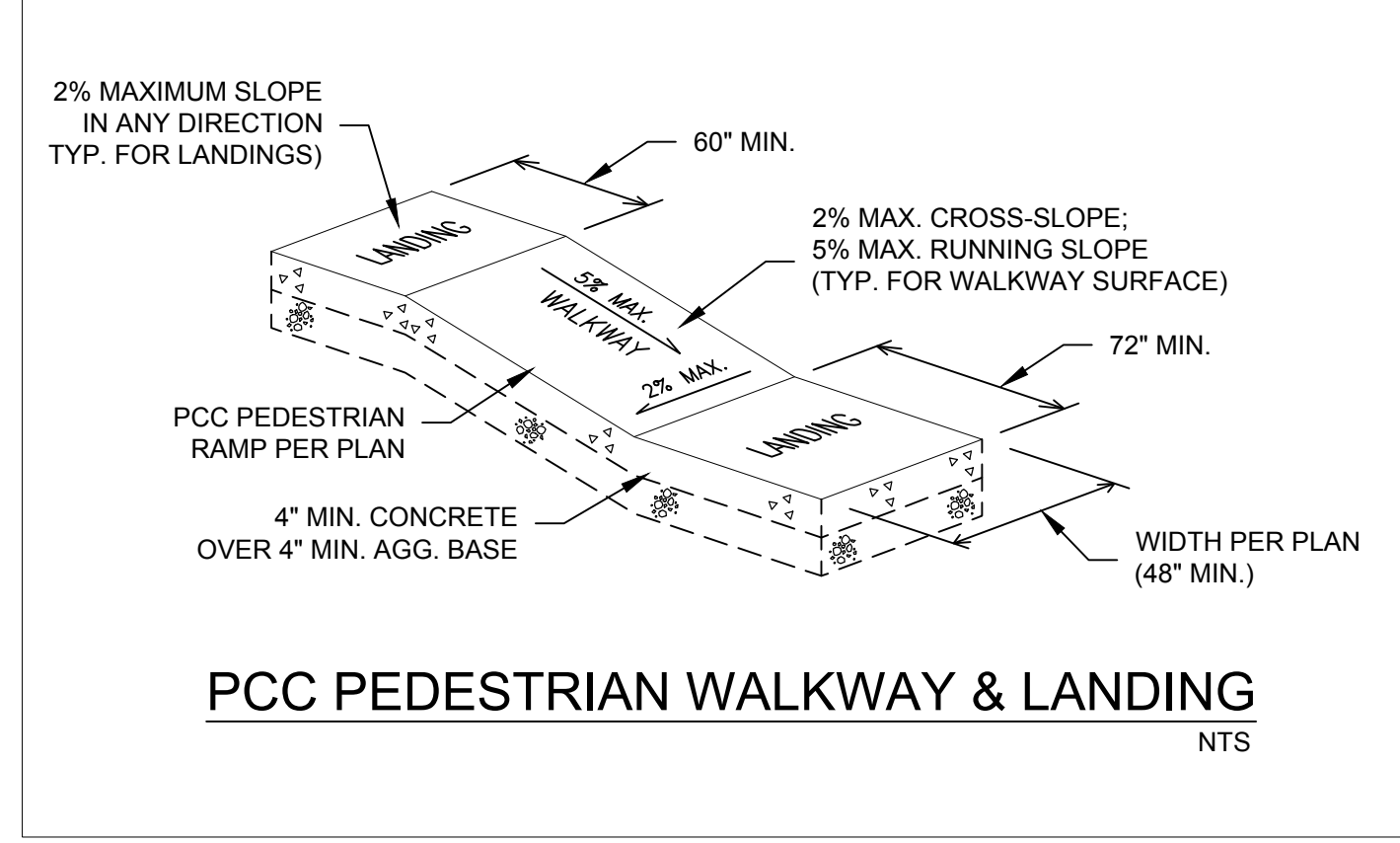
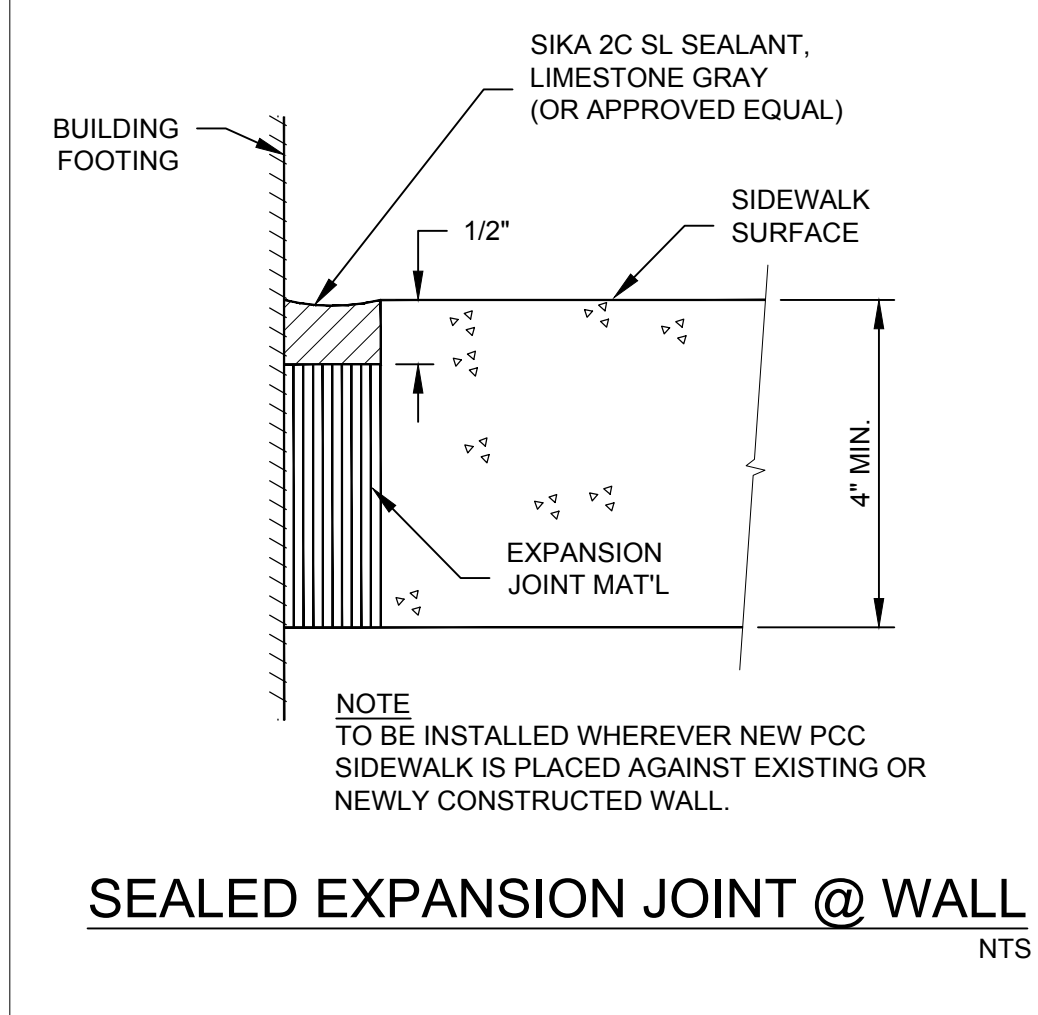
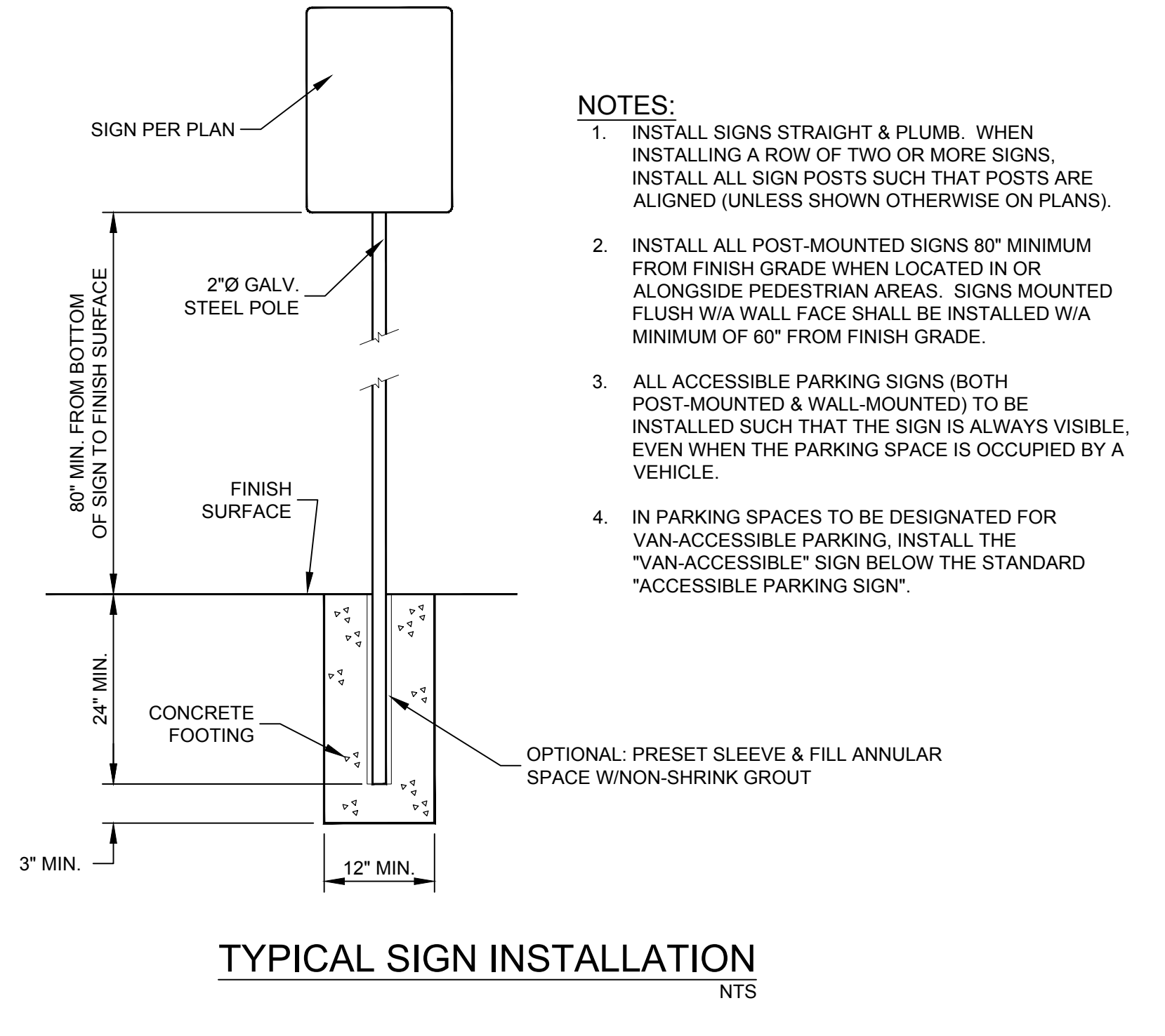
- REMOVE & REPLACE 6" FULL DEPTH HMA
- REMOVE EX. BRICKS & SOIL; INSTALL 6" FULL DEPTH HMA
- REMOVE EX. ASPHALT & INSTALL PCC COLORED SIDEWALK; DOWEL INTO EXISTING SIDEWALK (COLOR TO BE DETERMINED)
- REMOVE EX. BRICKS & SOIL; INSTALL PCC COLORED SIDEWALK; DOWEL INTO EXISTING SIDEWALK (COLOR TO BE DETERMINED)
- BACKFILL LANDSCAPE AREA TO MATCH EXISTING
- REMOVE & REPLACE (OR) INSTALL REDWOOD HEADERBOARD
- CO CLEAN OUT
- DI DROP INLET
- EB ELECTRICAL BOX
- MH MAN HOLE
- GV GAS VALVE
- WV WATER VALVE
- # BORE LOCATION (SEE BORING LOG)
- ① PRUNE TREE ROOTS
- ② DROP INLETS (SEE NOTE NO. 13)

ENLARGEMENT A
1" = 20'

	APP
	DESCRIPTION
	DATE
	REV
<p>INDEPENDENCE HIGH SCHOOL 1776 EDUCATIONAL PARK DRIVE, SAN JOSE, CA</p> <p>DW INFRASTRUCTURE - ADA WALKWAY ENLARGEMENT A</p>	
<p>FINAL PLANS FOR CONSTRUCTION</p> 	
DRAWN BY: TLS	
PROJECT NUMBER: 180114_01	
SCALE: 1" = 20'	
DATE: SEPT. 2018	
SHEET NUMBER:	
2 of 7	


Pavement Engineering Inc.
 You can ride on our reputation
 Corporate Office:
 3485 Sacramento Drive, Suite A
 San Luis Obispo, CA 93401
 805.781.2265

Path: Z:\SHARED\DRIVE\ACTIVE PROJECTS\EAST SIDE UHSD\180114-01_INDEPENDENCE HIGH\DRAWINGS\180114-01_DESIGN.DWG Plot Date: 9/25/2018 8:09 AM



							APP
							DESCRIPTION
							DATE
							REV
Pavement Engineering Inc. You can ride on our reputation Corporate Office: 3485 Sacramento Drive, Suite A San Luis Obispo, CA 93401 805.781.2265							
INDEPENDENCE HIGH SCHOOL 1776 EDUCATIONAL PARK DRIVE, SAN JOSE, CA DW INFRASTRUCTURE - ADA WALKWAY DETAILS							
FINAL PLANS FOR CONSTRUCTION							
DRAWN BY: TLS							
PROJECT NUMBER: 180114_01							
SCALE: NOT TO SCALE							
DATE: SEPT. 2018							
SHEET NUMBER:							
7 of 7							